

# GOETTGE DEMOLITION RANGE

## SOP

### RANGE DESCRIPTION

Goettge Demolition Range is an active; Demolition Training Range located at Grid 77407290. It is accessible from route MCB 3.

Primary Use: Breacher Training

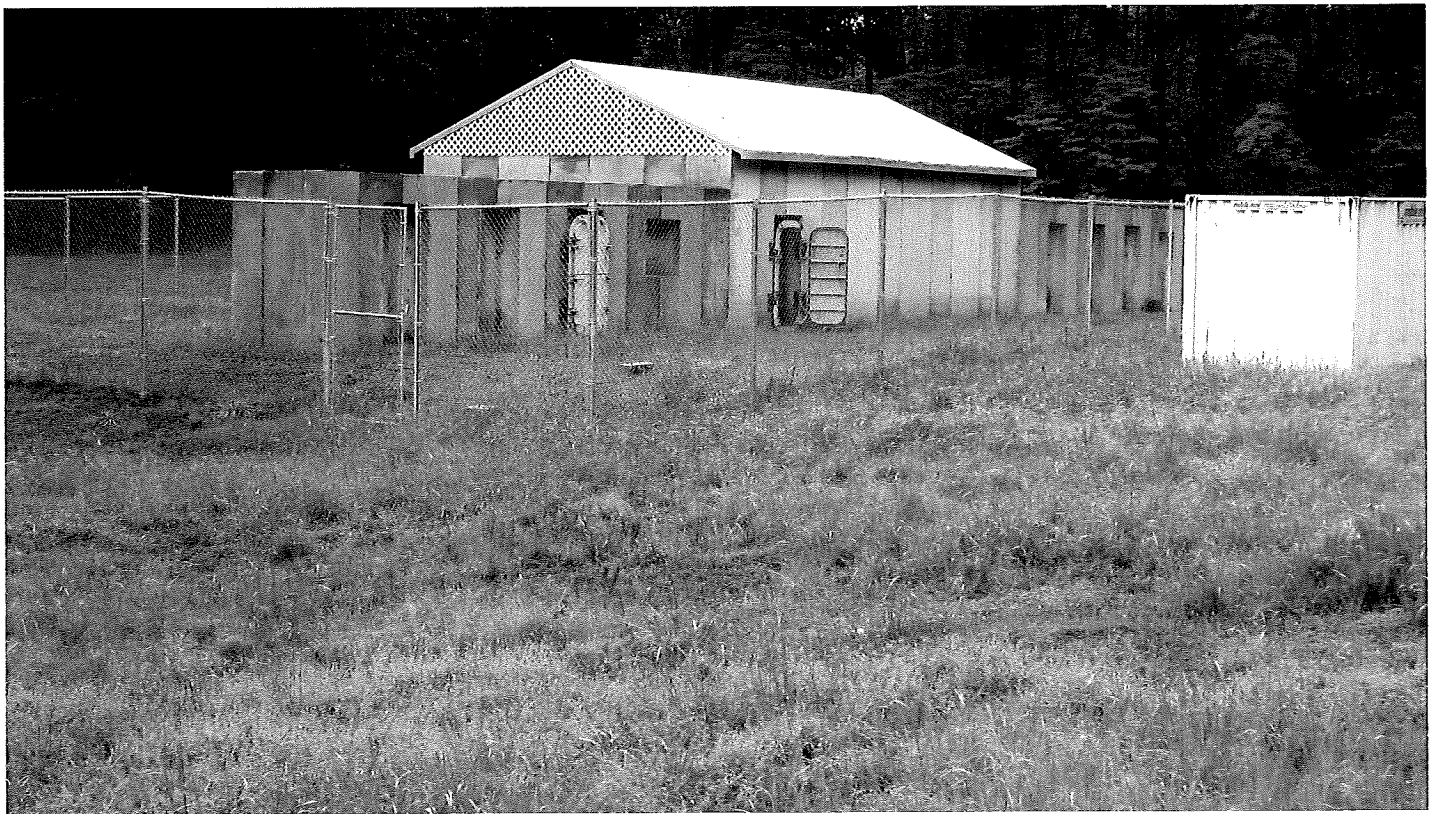
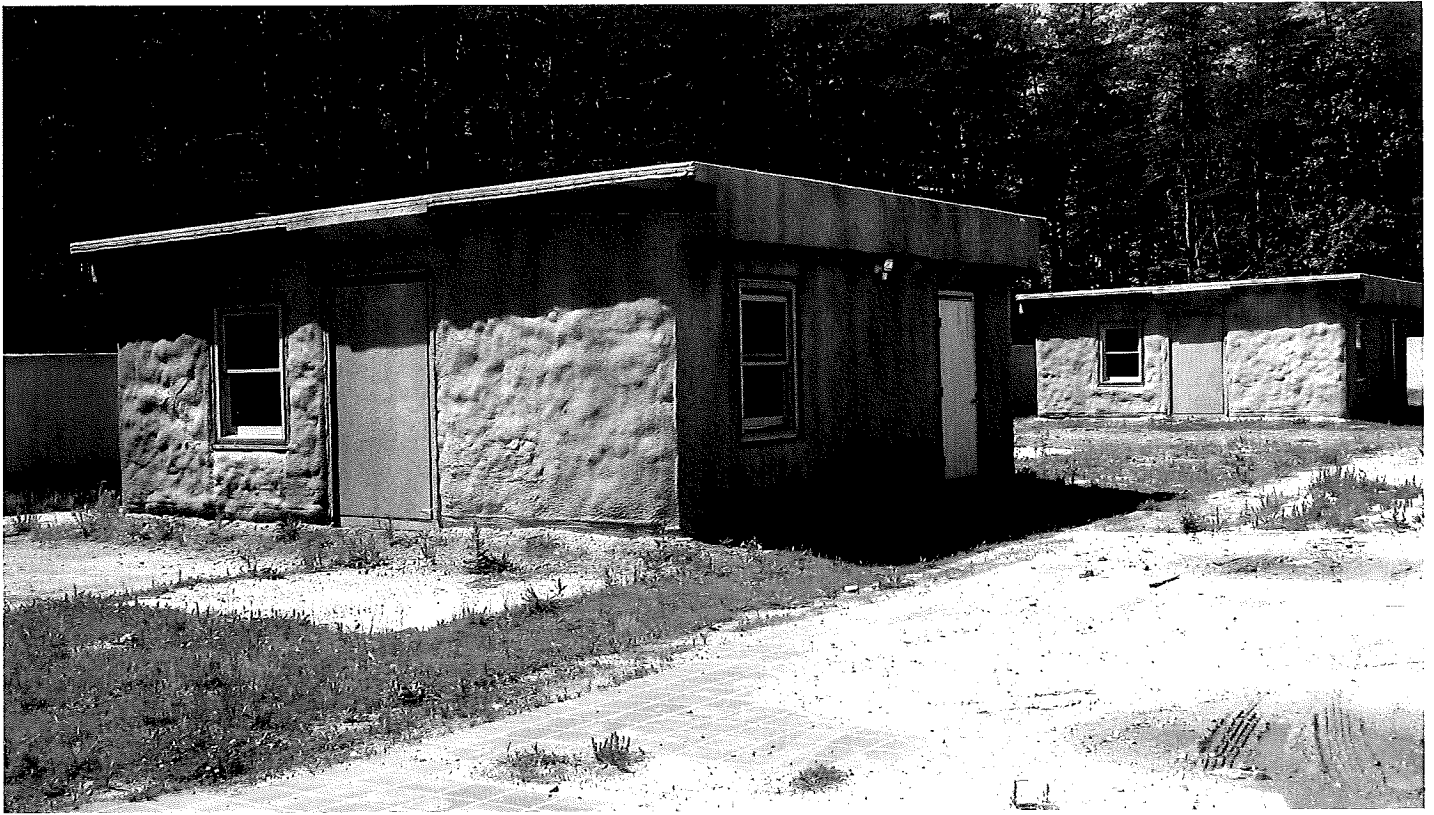
Alternate Uses: None.

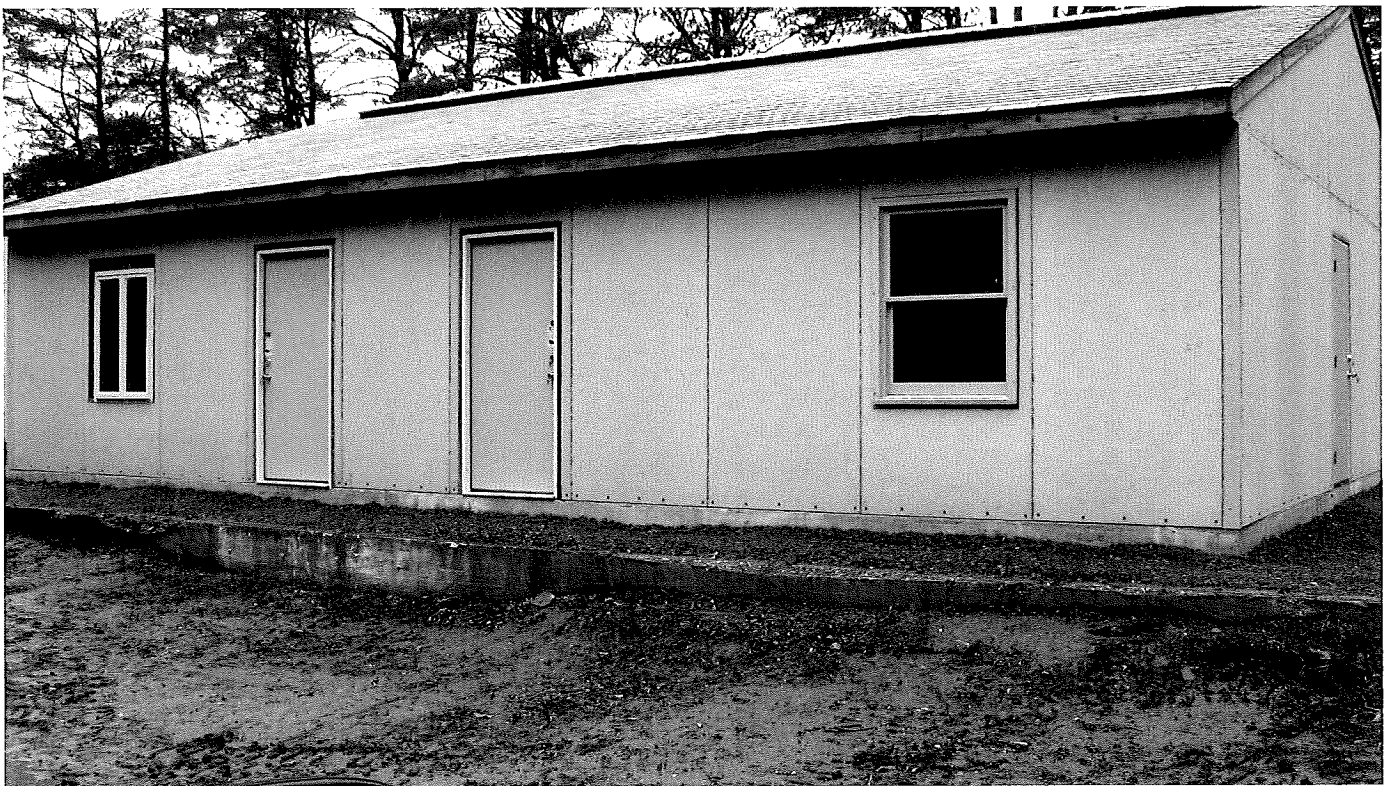
Goettge Demo

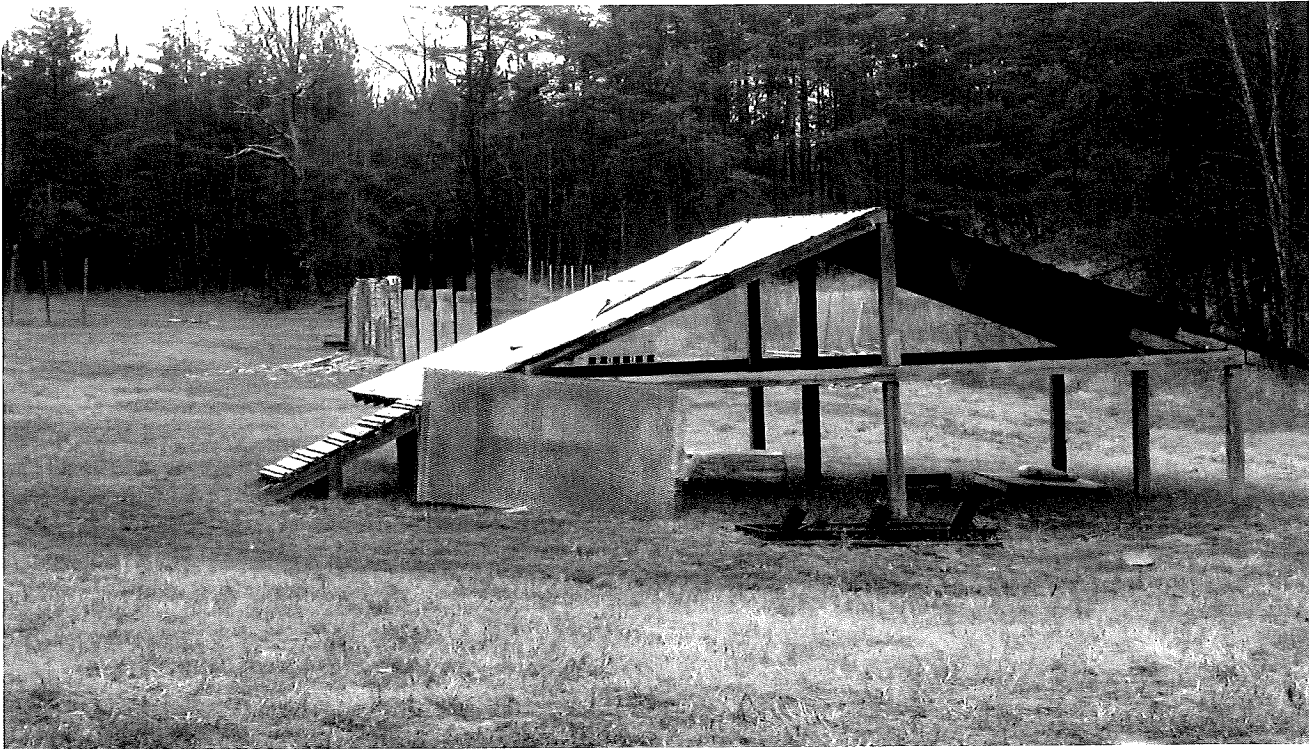












**DESCRIPTION:** Demolition Range  
**STATUS:** Active  
**LOCATION:** 77407290

**RANGE USES:**  
**Primary Use:** Dynamic Entry/Assault Breacher Training  
**Alternate Use:** None

**WEAPONS ACCOMMODATED:**  
-Shotgun

**AMMUNITION AUTHORIZED:**  
-Demolitions (20 lbs and under)  
-M1030 Lockbuster type shotgun load

**TARGETS/SIMULATORS/DEVICES:** None

**PRIMARY DIRECTION OF FIRE:** TBD

**RANGE USE RESTRICTIONS/COMMENTS:**

1. Only weapons, ammunition and ordnance weights listed in this document will be used on this range (Net Explosive Weight of demolition shots must not exceed twenty lbs).
2. All unit and MOS explosive procedures will be strictly adhered to.
3. Both OIC and RSO must be present during training.



4. HERO sensitive munitions are commonly used on this range. It is the OIC/RSO responsibility to understand all capabilities and limitations of their munitions.

5. Entry into Goettge Demo range is prohibited while "hot".

6. Shotgun breaching live fire (lockbuster rounds) is to be oriented away from the staging area (see enclosed documents):

a. When firing from the current "shotgun house" the GDR road must be locked or have a road guard posted to deny entry.

b. When firing from the training device North of the staging area (door house), fire will be oriented towards the "lower field". The "Lower field" is also the location of the roof façade and cannot be occupied.

7. All brass, trash, targetry and materials will be removed completely at the end of training by the using unit. This includes any materials used to place targets on.

8. Ensure range flags are posted, ear protection is worn (eye protection for steel), safety brief is given, Range Control contacted and all fires are directed between the left and right lateral limits markers (black and white striped).

9. Units that have requested contractor support (i.e., automated targets, PITS targets, battlefield effects simulators, etc.) that are not present on the specified range within 1 hour of the requested time and have not contacted RMB/TSCQ will forfeit all contracted support for the day.

10. Units that have occupied a range with approved contractor support (i.e., automated targets, PITS targets, battlefield effects simulators, etc.) and that have not begun to use that support within 2 hours of the requested hour of operation will forfeit all contracted support for the day.

11. Units that are training with contractor support (i.e., automated targets, PITS targets, battlefield effects simulators, etc.) that place themselves voluntary into check fire for 2 hours during the approved support operational hours will forfeit all support for the day.

12. Units that encounter situations where contractor support (i.e., automated targets, PITS targets, battlefield effects simulators, etc.) is delayed or interrupted by circumstances beyond the control of the requesting unit (i.e., RMB directed check fire, ASP support, MEDEVAC, etc.) must contact RMB/TSCQ in order to arrange continued support within the scope of the contract and available assets.

13. Explosive training will cease when lightning is detected within 10 miles.

**INSTALLED COMMUNICATIONS.** Telephone Landline

<b><u>MEASURED DISTANCES</u></b>	<b><u>MILES</u></b>	<b><u>MGRS</u></b>
Range Control	8.5	87406360
TBS	7.5	87106390
WTBN	9.0	87806740
ASP	11.0	91256605
EMT/Fire (Fire House 3)	9.5	89606710
Mainside Gate	13.5	94406440
Camp Upshur	5.5	80007850

**DIRECTIONS TO MEDEVAC LZ:** LZ Grouse (7750672583) is located between the lower field and the OCONUS compound. A secondary LZ is located directly across Goettge Demo Road from the classroom (LZ Heron).

**FACILITIES (Number of each):**

Towers: 0  
Sheds: 1  
Ammo Breakdown: 1  
Parking: Limited

**Description of other structures:**

- (1)After Action Classroom
- (1)SACON breacher house with wall facades
- (6)Small breacher test houses
- (1)Steel breach house
- (1)Roof breacher façade
- (3)Storage trailers/boxes
- (1)Walled breaching compound with (5) small breaching houses/rooms
- (1)Window/door breaching facade
- (1)Storage facility

**UTILITIES AVAILABLE:**

Electricity: Yes  
Lights: None  
Water System: None

**INSTALLED COMMUNICATIONS:** Phone hard line

<b><u>MEASURED DISTANCES</u></b>	<b><u>MILES</u></b>	<b><u>MGRS</u></b>
Range Control	8.5	87406360
TBS	7.5	87106390
WTBN	9.0	87806740
ASP	11.0	91256605
EMT/Fire (Fire House 3)	9.5	89606710
Mainside Gate	13.5	94406440
Camp Upshur	5.5	80007850

DIRECTIONS TO MEDEVAC LZ: LZ Grouse (7750672583) is located between the lower field and the OCONUS compound. A secondary LZ is located directly across Goettge Demo Road from the classroom (LZ Heron).

LASERS AUTH: None

AVAILABLE DAYS/HOURS: 350/All

AREA SUITABILITY:

<u>Unit Type</u>	<u>Unit Size</u>	<u>No. of Units</u>
Engineers	Platoon	1
EOD	Platoon	1
Spec OPS Breachers	Platoon	1

GEOGRAPHICAL DATA:

Access Routes	MCB-3
Soil Type	Dirt
Terrain Type	Level
Vegetation	Grass/Woodland

APPLICABLE MAP SHEET. All grid coordinates listed in this order apply to the Quantico Military Installation Map V834S Edition 4-NGA 1:25000.

COMMUNICATION REQUIREMENTS:

1. A radio check is required immediately upon occupying any portion of the RTA, every 30 minutes in a live fire status and every 3 hours in a non-live fire status.
2. The Range Control Facility (RCF) Fire Desk Net Control call sign is "Range Control". Your call sign is "Range XX" (name of range, training area or facility unit is occupying).
3. The primary RCF Fire Desk Net Control frequencies are: ELMR talk group "RC Safety" (ground) and 323.7 AM UHF (air).
4. The secondary RCF Fire Desk Net Control is telephone, numbers: 703-784-5321 or 5322.
5. OIC/RSO will monitor the RCF primary and secondary Safety Nets at all times. Instant communication is required.
6. Any unit with organic ELMR radios will have their ELMR radios programmed with the "RC Safety" talk group and use those radios as their primary means of communication within the RTA.



7. Units without organic ELMR assets will be issued ELMR radios from RMB upon check-in.
8. Approved Non-ELMR radios are only authorized for internal communication (ground).
9. If the RCF cannot reach a unit within the RTA via primary communication, the unit will be contacted via the secondary means of communication.
10. Upon loss of primary communication the OIC/RSO will initiate a "check fire"/cease training status and will contact the RCF via secondary communication. This communication will be maintained while primary communication is being restored. Units may only resume firing/training once primary communication has been re-established and clearance is granted by the RCF.

#### **INJURY CLASSIFICATIONS:**

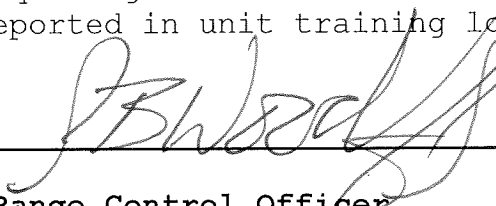
Injuries are classified into the following categories in order to aid in casualty evacuation from the RTA.

1. ROUTINE. Routine injuries are those injuries that are not threatening to life, limb or eyesight; and conditions or illnesses treatable by medication or procedures available at the base medical facilities.
2. PRIORITY. Priority injuries are those injuries that require immediate medical attention but are not threatening to life, limb, or eyesight if treated promptly.
3. URGENT. Urgent injuries are severe injuries that are threatening to life, limb, or eyesight and require immediate medical attention.
4. MASS CASUALTY. A mass casualty is a series of injuries with multiple priority and urgent medical patients.

MEDICAL EVACUATION (MEDEVAC) PROCEDURES:

1. Injury occurs.
2. Range immediately cease-fires.
3. Medical support evaluates/treats injured personnel.
4. Range OIC/RSO notifies the RCF of the injury, is the victim conscious/unconscious and what type of MEDEVAC transportation is requested (ground/air).
5. The OIC/RSO must maintain constant radio contact with Range Control and awaits further instructions.

\*Minor injuries and illnesses not requiring medical services need not be reported to the RCF but should be reported in unit training logs.

  
\_\_\_\_\_  
Range Control Officer

Date: 1 MAY 2017